



ACCESSIBILITY

AN EXPERIENCE FOR EVERYONE





INTRO

We are excited to present the initiatives that will ensure an even more diverse, welcoming, inclusive, and pluralistic Rock in Rio Lisbon for the public in this historic 2026 edition.

We have developed an operation that ensures that everyone can enjoy the Rock in Rio Lisboa experience to the fullest. Here we share the specific actions we are implementing in our accessibility operation, ensuring that each person has a full experience at the festival.

Together, we will celebrate not only music, but also diversity, creating an environment where all people feel represented and included.





“Our mission goes beyond music. We are committed to catalyzing positive change in society, inspiring people to act consciously and responsibly. By making Rock in Rio a fully inclusive and accessible space, we are building a more just and equitable future for all. Accessibility is a cornerstone of this journey, ensuring that every individual has the opportunity to fully enjoy the festival and truly feel part of the community we create.”.

ROBERTA MEDINA
CHIEF BRAND REPUTATION OFFICER



TARGET AUDIENCE

- People with disabilities
- Blind or visually impaired people
- Deaf people
- Neurodivergent people
- People with limited mobility and/or special needs
- People with obesity
- People with dwarfism or short stature
- Pregnant women
- People aged 60+



LISBOA

2026

Rock in Rio



CIDADE DO ROCK





GENERAL

MAP





ACCESS TO THE CITY OF ROCK:

Welcome Center

Exclusive access for wheelchair users.

- Location: access via the first access control point at the Main Gate, with a separate entrance and single line for people with disabilities and VIPs leading to the Welcome Center.
- Vehicles are not permitted inside the park. There will be limited dedicated parking spaces in the general parking lot, with an entrance in front of the Welcome Center, where there will be a person to validate the entry of accessible visitors, provide guidance, and assist.

Main Entrance

Recommended for people with disabilities who do not use wheelchairs and who arrive by public or private transport.

- Faster and smoother entry.
- Support is provided by the accessibility team. Once you pass through the turnstiles, a team with PwD signage will be ready to provide guidance and assistance.

Please note: No gate offers early entry; all gates open simultaneously at 2 p.m.

ACCESSIBILITY CENTER

The Accessibility Center is an exclusive area for assistance, support, and general services for visitors with disabilities and/or special needs. The space has a wheelchair repair workshop, motorized wheelchair loans, and a sensory room.

A team of specialists will be on hand to assist you. The space is conveniently located near the festival entrance.



ACCESSIBLE VIEWING PLATFORMS

Located at strategic points, with a good view of the main stages of the festival. Access is preferential for people with dwarfism and/or short stature, with limited mobility, with disabilities, and pregnant women, in accordance with operating regulations.



Sujeito a lotação.

POWER WHEELCHAIRS

The famous power wheelchairs will be available at the festival to assist with mobility within the racetrack. Participants can request to borrow these chairs, subject to availability, to ensure greater mobility and comfort during the event.



All these activities take place at the Accessibility Center! Subject to availability.

ROCK OFFICE

The Rock Workshop, located at the Accessibility Center, offers repairs and adjustments to wheelchairs and mobility equipment. The service is free, operates throughout the festival, and ensures that people with disabilities can enjoy the event comfortably and safely.



All these activities take place at the Accessibility Center! Subject to availability.

SENSORY KIT

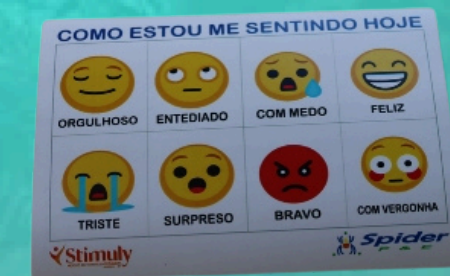
We provide sensory kits to support people with invisible conditions, such as ASD and other neurodiversities. The self-regulation kit at the festival includes earplugs, sunglasses, an alternative communication booklet, and sensory objects.



1 abafador



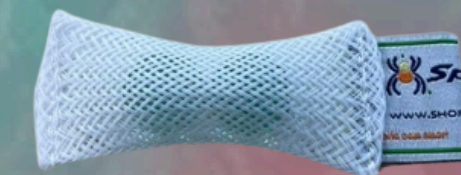
1 óculos



Cartão de Comunicação



1 Spinner



1 Trava dedos

SENSORY ROOM

The environment offers a safe and controlled space with reduced sensory stimuli, including lighting and sound, creating a welcoming environment with carefully selected resources based on science and studies by professionals in the field.



SPECIALIZED SERVICE

We have a team specialized in assisting people with disabilities (PWD). This team is trained to meet the individual needs of PWDs, offering support and guidance. These individuals will be stationed at strategic points throughout the festival.





ACCESSIBLE RESTROOMS

We provide accessible, spacious, comfortable restrooms equipped to accommodate people with reduced mobility..

- Exclusive use: Intended for people with disabilities, pregnant women, and those with special needs.
- Unisex: Ensuring entry for a companion of the opposite gender, if necessary.

SINTA O SOM (FEEL THE SOUND) SPACES

Sinta o Som (Feel the Sound) is a space designed for deaf audiences, located close to the speakers of the main stages, bringing the vibration of music so that it can be felt in its various forms.

- Important: access is subject to availability, due to space limitations.
- Each deaf person is entitled to one companion, and the access wristband can be obtained at the Accessibility Center.



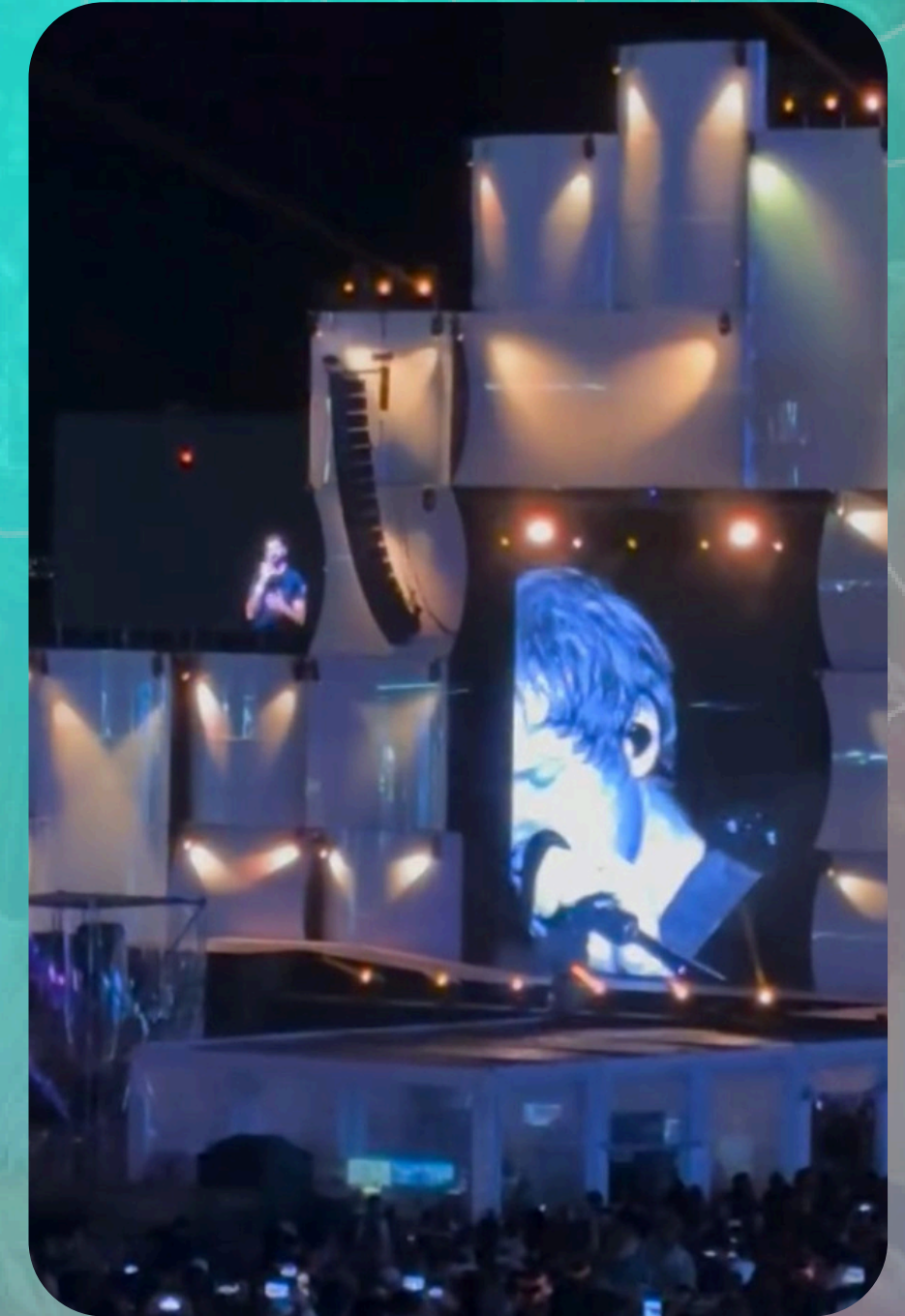


PORTUGUESE SIGN LANGUAGE

We offer simultaneous translation of the shows into Brazilian Sign Language (LGP), ensuring accessibility for the deaf audience. Available on the World Stage and Music Valley Stage.

AUDIO DESCRIPTION

We offer an audio description service that narrates everything that happens in the shows, providing a complete experience for blind or visually impaired people. In addition, all food and beverage areas have menus with audio descriptions, accessible via QR codes available at these locations. Upon arrival at the festival, please visit the Accessibility Center for more information on how to access the service.





ACCESSIBLE SHUTTLE

For added convenience, the event will feature an accessible shuttle service, with a vehicle adapted for wheelchairs, between Oriente Station and Parque Tejo.

DEDICATED PARKING

The event has reserved parking spaces for people with disabilities, people with disabilities, and other individuals who need and possess a parking permit for people with disabilities. Reserve your space using this form: <https://forms.gle/ZG6vvExWHQDgSgo2A>, and pick up your permit on June 15th, 16th, and 17th at the locations indicated via email to guarantee a parking spot.

ADAPTED FERRIS WHEEL

The Ferris wheel has an adapted cabin, prepared to accommodate a wheelchair and an attendant. The cabins also offer audio description.



LISBOA 2026

All in Rio

LET'S DREAM AND DO IT

Rock in Rio

LISBOA
2026

Stage for ALL